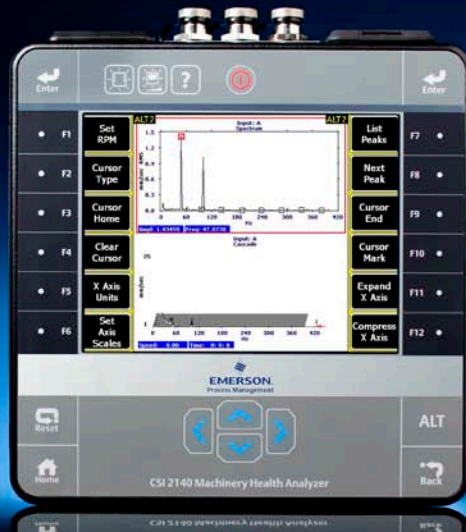


# CSI 2140 Machinery Health™ Analyzer



## VIBRATION ANALYZER DELIVERS POWERFUL USER EXPERIENCE

### THE CSI 2140 IS THE MOST COMPLETE TOOL FOR ASSESSING AND PREDICTING MACHINERY HEALTH

The CSI 2140 builds on Emerson's industry-leading CSI 2130 to make route-based maintenance more efficient and predictive diagnostics more usable. Influenced by human-centered design principles and built with users in mind, the CSI 2140 meets both usability and advanced diagnostics requirements of reliability engineers. With over 25 years of expertise in vibration analysis, Emerson's portable analyzers deliver the most powerful user experience for predicting equipment issues.

Perform routes more efficiently with the faster data collection and the ability to do four-channel collection. Then spend your extra time doing higher value tasks, like data analysis, root cause analysis, and maintenance planning.

Use wireless hotspots in your facility to send data back to the maintenance shop – directly from the field. An analyst in the office can begin to analyze data while you begin another route, so your data collection and analysis is done in parallel. Or send data from a remote plant location back to a central database so key stakeholders in your organization can view it.

### DESIGNED WITH YOU IN MIND

- Four-channel data collection makes bearing analysis easier and faster
- Understand shaft movement and transient state of machinery better with four-channel diagnostics
- Extended battery life allows you to cover an entire shift (and more) without the need to charge.
- Full-color touchscreen enables easy navigation and detailed field analysis) – and can be used with work gloves
- Large screen auto-adjusts based on ambient light – so you can see the information you need no matter where you are
- Built for comfortable, single-hand operation with thin profile
- Spend less time in harsh environments with fastest data collection on the market
- Advanced analysis tools, including cross-channel and transient analysis, aid identification of root cause
- Comfortable shoulder strap and built-in stand make the analyzer easier to use
- Bluetooth wireless communications with headphones for added convenience

# CSI 2140 Machinery Health™ Analyzer



## PREDICTIVE DIAGNOSTICS HELP YOU DETERMINE THE ROOT CAUSE OF EQUIPMENT ISSUES

### VERSATILE ADVANCED DIAGNOSTICS IMPROVE MACHINERY HEALTH

The CSI 2140 offers the industry's most complete set of capabilities for fast, accurate assessment of rotating machinery health – even the most difficult and complex machinery in your facility. With the CSI 2140, you can perform single, dual, or four-channel vibration analysis, cross-channel analysis, transient analysis, structural analysis, balancing, and motor monitoring.

Embedded intelligence in the analyzer walks you through the advanced diagnostics tools, providing pre-configured menus and pre-set technical set up. Troubleshooting documentation within the CSI 2140 aids with preliminary analysis and AMS Suite integrates with the analyzer for a deeper dive into the data.

### CARRY ONE TOOL TO THE FIELD

When you head out to the field for your collection routes, you don't want to carry multiple tools with you. The CSI 2140 gives you a single platform that enables you to perform a wide variety of machinery health tests. Balancing, temperature trends, and motor diagnostic capabilities coexist with the vibration analysis tools.

Data from all these tests loads into a single database – and you can trend data from various tests to gain a more holistic view of the machine's condition to predict when corrective maintenance needs to be performed. Use the CSI 2140 across your rotating equipment, including variable speed machines, complex gearboxes, slow speed equipment, turbomachinery, sleeve bearing machines, and reciprocating compressors.

©2013, Emerson Process Management.

The contents of this publication are presented for informational purposes only, and while every effort has been made to ensure their accuracy, they are not to be construed as warranties or guarantees, express or implied, regarding the products or services described herein or their use or applicability. All sales are governed by our terms and conditions, which are available on request. We reserve the right to modify or improve the designs or specifications of our products at any time without notice.

All rights reserved. Machinery Health and AMS are marks of one of the Emerson Process Management group of companies. The Emerson logo is a trademark and service mark of Emerson Electric Co. All other marks are the property of their respective owners.

### Emerson Process Management

#### Asset Optimization

835 Innovation Drive  
Knoxville, TN 37932  
T (865) 675-2400  
F (865) 218-1401

*Ansprechpartner / Distributor*



#### D. A. Concept AG

Postfach 8546 2500 Biel/Bienne  
Telefon: +41 32 345 10 70 Fax: +41 32 345 10 71  
info@daconcept.ch www.daconcept.ch